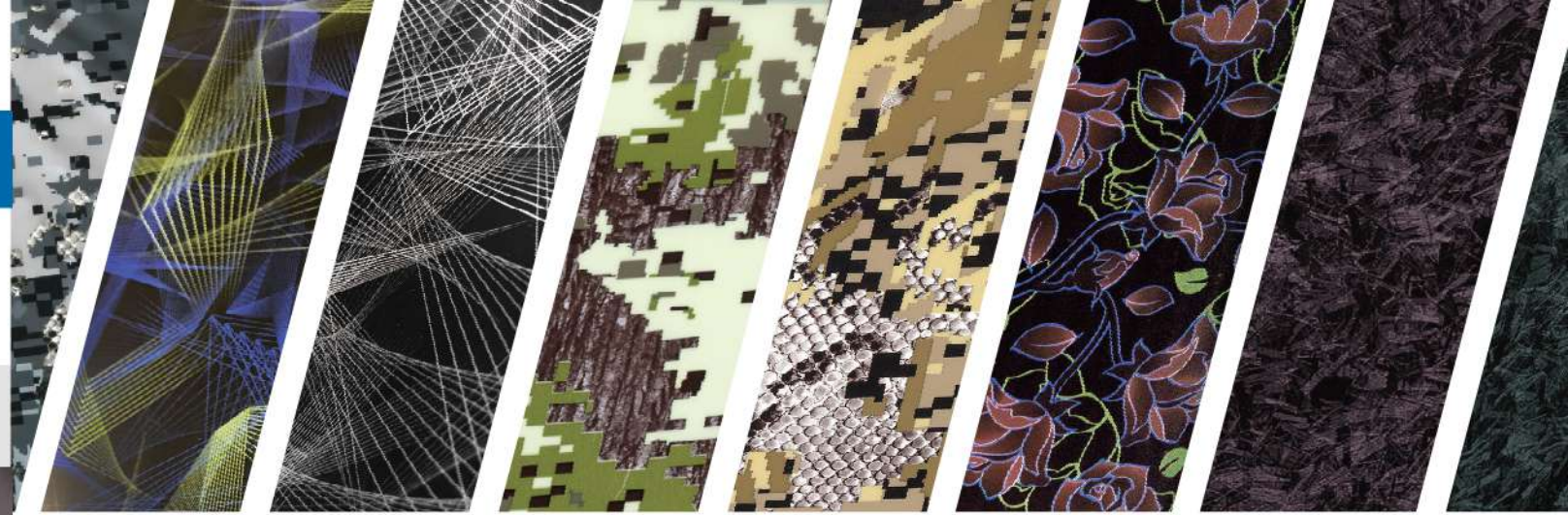


Back to Classics: IFFA prints the classic patterns with innovative ink and gives the patterns a brand new look!

向經典致敬！長久以來深受客戶喜愛的經典圖紋嶄新重現。融合最新油墨與專業印刷工藝，展現出截然不同的的美學效果。



## 2019 | 2020 NEW PATTERNS

CCH IFFA has more than 3,000 patterns to meet customers' demands for their wide applications. We are never satisfied so CCH-IFFA has been dedicated in research and development. Look our 2019/2020 highlights for your inspirations:

成昌興(彩衣)旗下擁有超過千種以上的紋路，提供客戶端多樣化的應用。但我們從不因此滿足，仍然鞭策自我不斷致力於研發與創新，請參考我們2019/2020新版趨勢。

[www.cchcubic.com](http://www.cchcubic.com)



### 我們的服務:

- 功能性膜料印刷(水轉印膜、熱塑轉印膜、金屬裝飾膜、防水透濕膜、模內複合膜...等)
- 圖紋設計與獨家客製 ■ 技術與流程諮詢 ■ 相關設備販售 ■ 為客戶專案提供解決方案

### Services We Provide:

- Functional thin-film supply (Hydrographic films, Heat transfer films, Metal decoration films, Waterproof and Breathable films, In-mold combination films...etc.)
- Pattern design and customization ■ Technical and process consultation ■ Equipment ■ Solution provider



CHENG CHANG HSING INDUSTRIAL CO., LTD.

No.37, Lane 612, Hetou Road, Toucian Village, Hemei Town, Changhua County 50851, Taiwan  
+886-4-7573111 / +886-4-7555771  
[www.cchcubic.com](http://www.cchcubic.com) [info@cchcubic.com.tw](mailto:info@cchcubic.com.tw)



LINE ID : @cchiffa    Whatsapp : +886937126771  
WeChat (EN/ES) : cchbenjamin    WeChat (CH/JA) : cchrna  
[www.facebook.com/IFFAWTP](http://www.facebook.com/IFFAWTP)    [www.instagram.com/cch\\_iffa](http://www.instagram.com/cch_iffa)





# CA-R NEW

## ROYALTY PATTERNS

**DIGITAL CAMOUFLAGE** Camouflage is not only the privilege for hunting. Digital Camouflage for electronic devices, glasses wear, daily commodities, traveling appliances gives a sense of modernity and technology. Fulfill your imagination with digital camouflage!

迷彩不再僅是狩獵產品的專利。「數位迷彩」適用於電子產品、日常用品、旅行配件、運動用品，賦予產品更多的摩登科技感。讓彩衣的「數位迷彩」實現您更多的想像！



CA-R-068



CA-R-068



CA-R-067-2



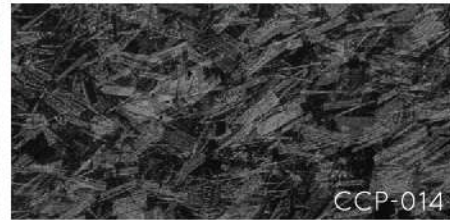
CA-R-067-1



CA-R-067



# CCP NEW



## CARBON FIBER PREMIUM

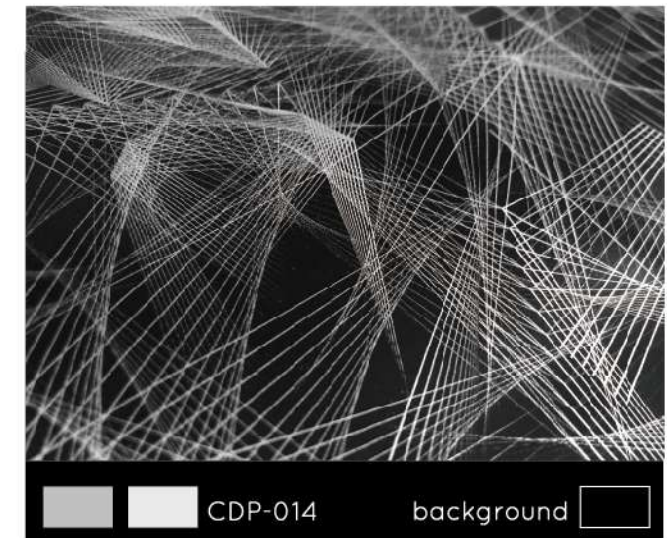
**Forged Carbon** : carbon fiber has been always a classic match for various applications in transportation, medical devices and more. Forged carbon gives more progressive and fashionable look for your products.

碳纖維紋路長久以來運用於交通工具或醫療級用品，一直是不褪潮流的紋路，彩衣新開發的「鍛造纖維」賦予產品更前衛的視覺感受。



## DESIGNER PREMIUM

直線抽象圖展現出彩衣專業精湛的印刷實力！細膩的抽象元素，甫推出即深受眾多汽車內飾的客戶喜愛。我們期待您更多獨創的應用！



**Abstract Lines** : The delicate lines show IFFA's professional experience in printing. The abstract lines patterns are so loved by automobile/motorcycle modifiers. We look forward to new applications!

